

Lawson State Community College



Our Mission

Lawson State Community College is a comprehensive, multi-campus college, which seeks to provide educational opportunities, promote economic growth and enhance the quality of life for people in its service area. The College is dedicated to providing affordable and accessible learning opportunities in order to prepare students for employment or career advancement, enable students to transfer to senior colleges and universities, and provide customized training needs for business and industry.

A quality education opens the door to your future. Choose Lawson State and start college life on the right track. Start with us and build a solid foundation for success.

- Message from the President1
- Academics2
- Health Sciences4
- Technical6
- Student Life8
- Student Organizations.....10
- Student Services.....12
- Financial Aid16
- Admissions17
- Phone ListingsBk

*Start Here,
Go Anywhere!*



Lawson State Community College is accredited by the Commission on Colleges of the Southern Association of Colleges and Schools (1866 Southern Lane, Decatur, GA 30033, (404) 679-4501) to award Associate Degrees and Certificates. The college is approved and accredited by the Alabama Department of Postsecondary Education, The National League for Nursing Accrediting Commission and the Association of Collegiate Business Schools and Programs.

It is the policy of the Alabama State Board of Education and Lawson State Community College, a postsecondary institution under its control, that no person shall, on the grounds of race, color, sex, religion, national origin, age, or disability be excluded from participation in, be denied the benefits of, or be subjected to discrimination under any program activity, or employment.

Message from the President

Welcome! Our doors are open to you at Lawson State Community College where students are our number one priority. We tailor our programs and services to groom students for diversified employment. We are committed to providing programs and services which are comprehensive, flexible, accessible and community -related. Realizing that education continues beyond matriculation at Lawson State, we prepare students for a lifetime of living and learning.

We have made significant strides in just the last year. To the credit of our Lawson State family, we enhanced opportunities in the health professions program; consolidated and expanded our Alabama Center for Automotive Excellence, that features partnerships with Toyota, General Motors and Ford; opened our new Living for Learning Residential Facility and conducted capital improvements; and promoted business development and training for our students, corporations and community through our Alabama Center for Advanced Technology and Training (ACATT).

Lawson State Community College, a public, comprehensive, multi-campus college, serves Bessemer, Birmingham and the surrounding areas. Since our founding in 1949, Lawson State has focused its attention on the educational success and the career accomplishments of the students. We offer more than 80 programs of study in the college transfer and technical divisions flexibly scheduled for days, evenings, and weekends. Lawson State has an approximate enrollment of 6,500 credit and non-credit students.

We encourage you to learn more about the number of educational and recreational opportunities that we have to offer. Come visit us - feel the sense of excitement and pride that abounds at Lawson State - and then make Lawson State your home!



“The influence of our College is far-reaching as our faculty, staff, students and alumni impact lives everyday.”

*Perry W. Ward, Ph. D.
President*





STARS helps Lawson State students make an easy transition to any public four-year college or university in Alabama while retaining all course credits. This web-accessible database system provides guidance and direction to streamline the transfer process. A Transfer Guide/Agreement outlines the first two years of course work relative to the major of choice. If the guidelines are followed and the declared major does not change, students can transfer to any public four-year school in Alabama. For more information, consult your academic advisor or visit the STARS website at www.stars.troy.edu



Academics

Lawson State General Studies Degree Programs Associate in Arts (A.A.) and Associate in Science (A.S.) Degrees

Areas of Concentration

- Adult Education
- Advertising
- Applied Mathematics
- Architecture
- Art Areas
- Athletic Training
- Behavioral Science
- Biology
- Business
- Business Education
- Chemistry
- Clinical Lab Sciences
- Communication Studies
- Computer Science
- Criminal Justice

- Criminology
- Pre-Dentistry
- Economics
- Education (various disciplines)
- Engineering (various disciplines)
- English
- Health & PE
- History
- Hotel and Restaurant Mgmt.
- Human Development
- Journalism
- Lab Tech.
- Pre-Law
- Math
- Pre-Medicine
- Music
- Pre-Nursing
- Nutrition & Food Service
- Pre-Occupational Therapy
- Pre-Optometry
- Pre-Osteopathic Medicine
- Physical Education

- Physics
- Political Science
- Pre-Pharmacy
- Pre-Physical Therapy
- Psychology
- Public Administration
- Public Relations
- Public Safety
- Radiologic Sciences
- Rehabilitation Services
- Respiratory Therapy
- Social Science
- Social Work
- Sociology
- Spanish Education
- Special Education
- Sport and Fitness
- Surgical Physician Asst.
- Pre-Veterinary

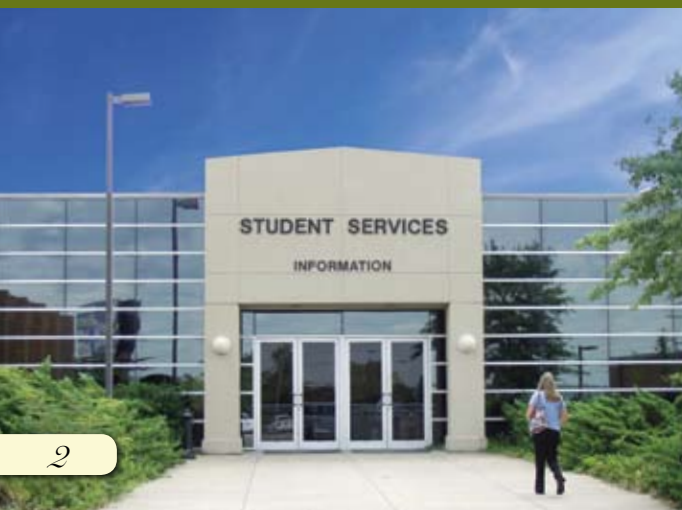
*For more General Studies offerings, see LSCC's current catalog.

Associate in Applied Science (A.A.S.) Degrees

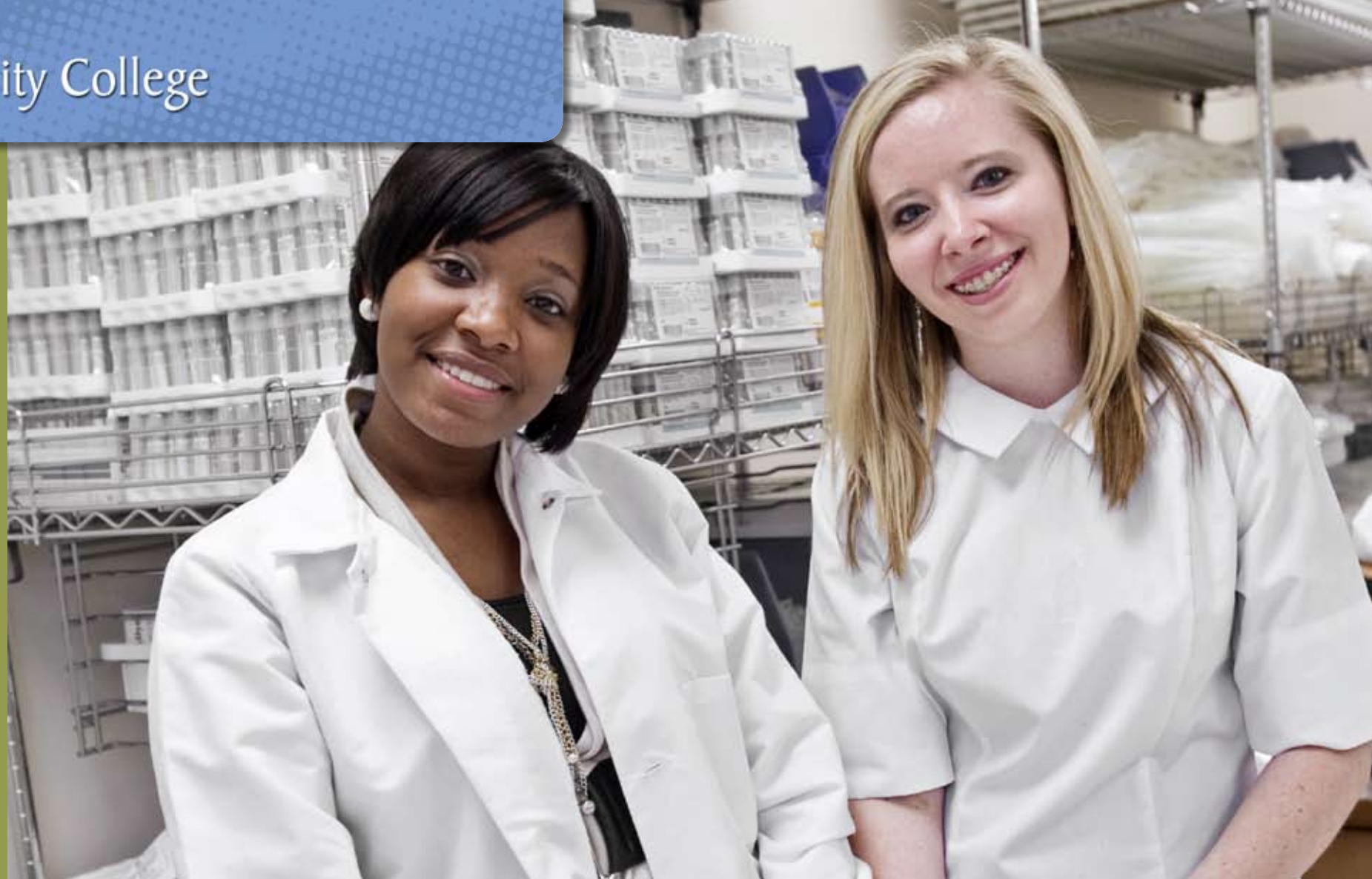
Areas of Study

- Accounting
- Automotive Service Technology: Ford, General Motors, and Toyota
- Business Administration and Management
- Child Development (Early Childhood Education)
- Computer Science (Business Education)
- Computer Science (Math)
- Criminal Justice
- Drafting and Design Technology
- Electronics Engineering Technology
- Registered Nursing
- Office Administration
- Office Administration (Medical Technology)
- Social Work Technology

Lawson State's Associate Degree programs are designed for students who seek immediate entry into the workforce, as well as those who plan to continue their education at a four-year college.



Lawson State Community College offers programs and services through an academic division and a career/technical division. These programs and services are comprehensive and include university/college transfer degree programs; career/technical education; adult education; business and industry training; workforce development; and civic, social, cultural and personal development. Instructional delivery will continue to be varied and flexible to include traditional in-class activities, online, distance learning, and web enhanced instruction and activities.



NEW NURSING PHOTO
HERE

*Start Here,
Go Anywhere!*

Health Sciences

Health care workers are among the most sought-after professionals in today's job market. Lawson State prepares students for success with degree and certificate programs that combine lab and classroom study to provide comprehensive training and career readiness.

Degree and Certificate Areas of Study

- Dental Assisting
- Health and Physical Education
- Home Health Aide
- Nurse Assistant
- Pre-Nursing
- Licensed Practical Nursing
- Registered Nursing

Nursing Mobility Program

Experienced LPNs can apply for Lawson State's Nursing Mobility program. Flexible scheduling allows you to continue working while you prepare for the National Council Licensure Examination (NCLEX-RN) and earn your Associate in Applied Science degree.

Once you complete the three-semester program, you'll be qualified to pursue careers in specialized areas like Pediatrics, Intensive Care, or Gerontology. (Note: Admission to the ADN program is competitive and admission to Lawson State does not guarantee admission to the program.)

"Serving as SGA president at Lawson State has been one of my life's greatest honors and achievements."

Tavarus Hartsfield – Bessemer, AL



Quick Facts

Campuses: Bessemer and Birmingham, Alabama

Year Established: 1949
Total Enrollment: 6,510
Full-Time Enrollment: 65%
Average Age: 23
Female Enrollment: 59%
Male Enrollment: 41%
Students Receiving Financial Aid: 85%

Degrees:

Associate in Arts
Associate in Science
Associate in Applied Science
Associate in Occupational Technology Certificates
Short Certificates

Web Address

www.lawsonstate.edu



Shoot new welding shot, Roy Ledford 929-3477

Technical

Lawson State offers day, evening, and weekend classes with a wide range of programs that prepare students for careers in business and industry.

TECHNICAL PROGRAMS

Associate in Applied Science Degrees (A.A.S.):

Accounting
Automotive Service Technology (Ford, GM, and Toyota)
Aviation Maintenance
Building Construction
Computer Science
Drafting and Design
Electronic Engineering
Horticulture
Industrial Electronics
Office Administration

Associate of Occupational Technologies Degree Programs (A.O.T.):

Auto Body Repair
Automotive Mechanics
Commercial Art
Dental Assisting
Diesel Mechanics
Graphics and Prepress
Communications
Welding

Certificate and Short Certificates:

Air Conditioning / Refrigeration
Auto Body Repair*
Automotive Mechanics*
Aviation Maintenance
Barbering*
Building Construction
Business Administration / Management
Cabinet Making*
Carpentry*

Child Development
Commercial Art
Commercial Food Service / Catering*
Commercial Sewing*
Computer Science
Computer Science (Business Administration)
Cosmetology*
Criminal Justice
Dental Assisting
Diesel Mechanics*
Drafting and Design
Electrical
EMS / EMT
Fashion Merchandising
Fire Science
Graphics and Printing*
Geographic Information Systems
Home Health Aide*
Horticulture
Industrial Maintenance
Interior Design
Machine Tool Technology
Masonry*

Microelectronics
Nail Care*
Nurse Assistant*
Office Administration
Plumbing*
Radio / TV Production
Real Estate
Sewing in Soft Interior Furnishings*
Sewing in Tailoring and Alterations*
Welding*

INDUSTRY CERTIFICATES

Certified Novell Engineer
CISCO-Certified Network Associate
Microsoft Certified Systems Administrator
Microsoft Certified Solutions Developer
Microsoft Certified Systems Engineer
Microsoft Office User Specialist
Microsoft Certified Professional

* Denotes "Ability to Benefit" / CPAT eligible programs.

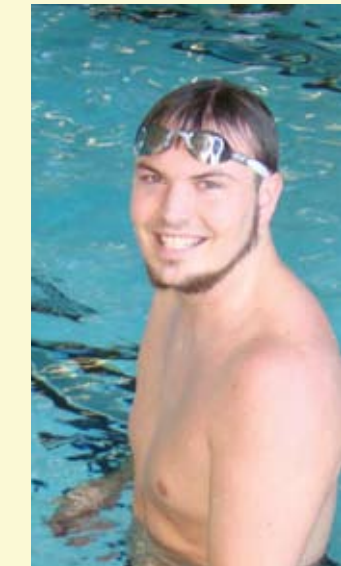
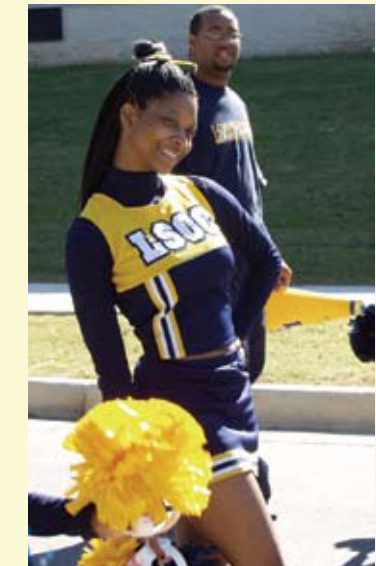
"My recruiter, Jose, not only helped guide me during my transition to Lawson State, but he's always available if I have questions."

Denisse Siova – Birmingham, AL



Why we love Lawson...

- Quality education
- Affordable rates
- Tuition assisted programs
- Flexible scheduling which includes online, mini-terms, day, evening and weekend classes
- Over 100 College Transfer, Health Professions, Career Technical and Business degrees and/or Areas of Concentration under General Studies
- A member of STARS which allows for hundreds of college transferable credits to 4-year institutions



Student Life

Career Services

The Career Services Center functions as a bridge between the student's academic preparation and the world of work. The Center has numerous activities, including career counseling, maintaining a career information library, receiving and publishing job vacancy notices, arranging for prospective employers to visit the campus, interviewing applicants, mailing students' credentials to prospective employers, and publicizing campus interviews.

Housing

The Residence Facility is a place for living and learning. Constructed in 2007, this smoke-free facility provides housing for 120 students. It is also a place you will make new friends during your enrollment.

Residence Hall applications are available through the Office of Student Life (929-6352). Room assignments are made on a first come, first served basis

Sports

Lawson State Community College is committed to providing quality intercollegiate and intramural programs designed to foster the personal growth of each student. These programs encourage individual and team achievement while fostering academic success. A variety of athletics and recreational facilities are available. The newly renovated Arthur Shores Fine Arts Building is equipped with a modern fitness center, hardwood court gym, swimming pool, and locker facilities. Students may participate in basketball, baseball, volleyball, field and track, cross-country, tennis, swimming and golf.

*Start Here,
Go Anywhere!*



"I came to Lawson to play Cougar baseball and I'm loving every minute of it!"

Ryan Nicholas – Luskin, TX



“Lawson State provides the total college experience. In addition to excelling in academic programs, You can participate with the clubs and organizations and enjoy sports. There is something for everyone.”



Student Organizations

Activities

Activities at the College represent a diversity of student interests. Students are encouraged to participate in annual activities designed to set the cultural, spiritual, moral, and academic tone of the institution. Such activities include: SGA elections, installation of SGA officers, convocations, annual Christmas musicals, Afro-American history month, Career Fair, Blue and Gold Week, blood drives, Martin Luther King, Jr. celebration, vocational education week, health fairs, homecoming, art exhibits, honors convocation, graduate / alumni banquet, President's brunch, and commencement activities.

Student Organizations

Student organizations are open to all students. These include: Student Government Association, Association of Information Technology

Professionals, Alpha Theta Phi Library Society, Kappa Beta Delta International Honor Society, Phi Beta Lambda, Students in Free Enterprise, Student National Education Association, Inter-Club Council, Mu Beta Chi Phi, The Sophist Club, Alpha Sigma Mu, Human Services Club, Afro-American History Club, Student Nurses Association, Pep Squad, Phi Theta Kappa Honor Society, Skills USA (VICA), AWS (American Welding Society), American Dental Assistants Association, SME (Society of Manufacturing Engineers), College Ambassadors, Dance Team, Cheerleaders, and the Choir.

Student Health Services Office

Student health services provides direct, basic health care to all students following assessments illness or injury by licensed staff. Wellness is an integral component of our student health services.

“The instructors at Lawson are providing me with the guidance and direction that I need in order to succeed and excel in my education.”

Tabitha Brown – Hoover, AL



*Start Here,
Go Anywhere!*



Why we love Lawson...

- Excellent health professions programs on both campuses to include RN, LPN, Dental Assisting and EMS
- Qualified, experienced and caring instructors, administrators and staff
- Exciting new Career Technical concentrations to include: Automotive Manufacturing and Robotics, Alternative Fuels and New Industry Certifications
- Partnerships with UAB, Samford, Stillman, University of Alabama, UAB West, Microsoft, Novell, CompTIA, General Motors, Ford Motors, Children's Hospital, BMW, Toyota, Alabama Power and many, many more
- Small class sizes for more individualized instruction



Student Services

Counseling Services

The counseling staff provides professional guidance and counseling services. Services include: personal counseling, career and academic advisement, assessment (achievement, aptitude, career, interest, personality, self-directed search and values inventory), college transfer information, student activities information, tutorial services, and academic placement. Special needs referrals are made as needed and all services are confidential.

TRIO Programs

TRIO programs at the College are federally funded programs that identify youth or adults who are low income or first generation students. Participants are selected according to their potential for academic success. TRIO is comprised of two programs: Upward Bound and Student Support Services.

Student Records Office

The Student Records Office primarily stores and maintains student academic records. This office provides transcripts of student academic records (official and student copies), facilitates registration each semester for credit classes, verifies and certifies student enrollment status. In addition, the office processes grade changes, certificates and degrees, and changes in student information.

Student Recruitment Office

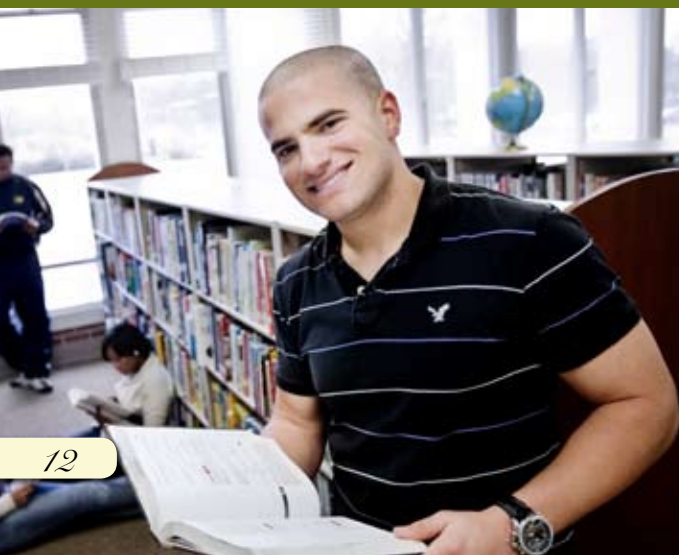
The Student Recruitment Office is comprised of the College's recruitment team. The team actively promotes the College and its programs of study in a variety of venues while assisting prospective students' transition into the College's student body.

The Admissions Office and the Office of Student Financial Services are also part of Student Services. These areas are discussed within separate sections of this publication.

To schedule campus tours
call (205) 929-3412

*We invite you to come and see us,
walk around the campus and become
personally acquainted with all that is
truly distinctive about Lawson State.*

*Tours are scheduled on Tuesday at
10:00 a.m. and Thursday at 4:00 p.m.
To arrange a visit contact the office of
Public Relations at (205) 929-2078.
Visit Us. You'll be impressed!*



Financial Aid

Numerous financial aid options are available for Lawson State students, including grants, scholarships, and work-study programs. Detailed information is available at our Office of Student Financial Services.

Federal Pell Grants

Pell Grants are awards that do not require repayment. Amounts are based on individual or family financial circumstances and range from \$100-\$4310 per year. Applicants must complete the Free Application for Federal Student (FAFSA) available at Lawson State or online at www.fafsa.ed.gov.

Federal Supplemental Educational Opportunity Grant

These federal grants are awarded to students demonstrating exceptional financial need. Priority is given to Pell Grant recipients.

- GRANTS
- WORK-STUDY
- SCHOLARSHIPS



Alabama Student Assistance Program

The Alabama Student Assistance Program (ASAP) is a state-funded grant made available to Alabama residents demonstrating the greatest financial need who are Federal Pell Grant eligible. Funds are limited.

Work Study Programs

Federal and college-sponsored programs allow students to work on campus for 10-15 hours per week. Job opportunities are limited and students are encouraged to apply early.

Other financial aid programs available through Lawson State:

- Tuition Management System
- Veterans' Programs
- Alabama GI Dependents Scholarship Program
- Alabama National Guard Educational Assistance
- Alabama Student Assistance Program (ASAP)
- Alabama Prepaid Affordable College Tuition (PACT)
- Vocational Rehabilitation
- Workforce Investment Act (WIA)

Scholarships

Lawson State is your source for a wide range of private and institutional scholarships, including academic, athletic, technical and performing arts. Full-time students who maintain qualifying grade-point averages and fulfill other requirements can keep these scholarships throughout their programs of study.

LSCC Federal Financial Aid Code: 001059



Visit our web site at www.lawsonstate.edu

Admissions

The Admissions Office is located in the Student Services Center, Building A on the Bessemer Campus. The Office of Admissions and The Records Office use a combined office location on the second floor of the Administration Building A on the Birmingham Campus. Hours of operation are Monday through Thursday from 7:30 a.m. until 7:00 p.m. and on Friday from 8:00 a.m. until 5:00 p.m. To schedule a campus tour, please call the Student Recruitment Office at 929-3412. Email your questions to admissions@lawsonstate.edu.

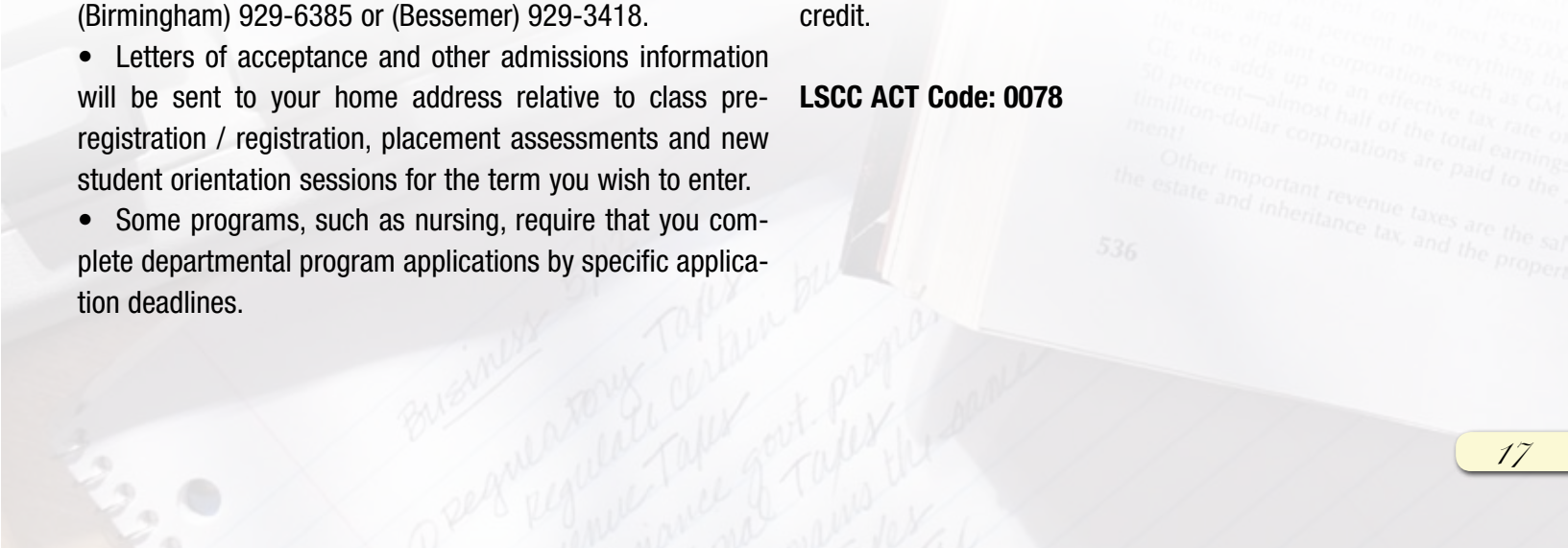
Prospective students may follow these steps when applying for admission to Lawson State Community College:

- Submit a completed application for admission by mail, personally, or online at www.lawsonstate.edu.
- If applicable, request that official copies of your GED score report, high school transcript and / or all college transcripts be mailed to either location of the Admissions Office. (Lawson State Community College, 3060 Wilson Road, SW, Birmingham, AL 35221 or Lawson State Community College, Bessemer Campus, 1100 9th Avenue SW, Bessemer, AL 35022).
- Complete the Compass Placement Assessment, unless exempt. (Contact the Admissions Office for exemption information.) Assessments are offered multiple times weekly on both campuses. Assessments occur in the Leon Kennedy Student Center on the Birmingham campus and in building A on the Bessemer campus. To schedule an assessment, call (Birmingham) 929-6385 or (Bessemer) 929-3418.
- Letters of acceptance and other admissions information will be sent to your home address relative to class pre-registration / registration, placement assessments and new student orientation sessions for the term you wish to enter.
- Some programs, such as nursing, require that you complete departmental program applications by specific application deadlines.

Academic advising is provided by counselors prior to pre-registration or registration for entering students' first semester. Thereafter, advising is provided by instructors within students' programs of study. Students' acceptance letters provide information about pre-registration and / or registration for their first semester. Class schedules are available on the website at www.lawsonstate.edu or may be acquired in person or by U.S. mail through the Office of Admissions.

- Admissions policies may be found on our website. Students not awarded The Alabama High School Diploma or its equivalent or the GED may be admitted under the "Ability to Benefit" provision after successfully passing the Career Programs Assessment Test (CPAT).
- Students enter or re-enter Lawson State Community College prior to fall, spring or summer semesters. The College also provides shorter terms, called mini terms, within the regular fall, spring, and summer semesters. Mini term classes meet more minutes per class but fewer weeks than classes within regular semesters.
- General principles regarding transfer credit are denoted within the college catalog. Transfer credit is evaluated and posted to the student information system, to the extent possible, prior to a student's first semester presuming transcript availability. Some credits may be ineligible for immediate transfer due to accreditation issues at external institutions or due to incompatible course content. Please contact the Office of Admissions if you have questions about potential transfer credit.

LSCC ACT Code: 0078



Lawson State Community College



IMPORTANT TELEPHONE NUMBERS

LAWSON STATE COMMUNITY COLLEGE	925-2515		
Academic Dean	929-6357	Dean of Student Life	929-6311
Admission and Records	929-6309	Dean of Students	929-3510
Admissions Office-Bessemer Campus	929-3414	Dual Enrollment Program	929-6303
Records Office-Bessemer Campus	929-3410	General Education	929-3449
Alabama Center for Automotive Excellence	929-3483	Housing	929-6352
Athletics	929-6389	Humanities	929-2065
Associate Dean – Liberal Arts/College Transfer	929-6314	Career Services	929-3514
Associate Dean of Career Technical	929-6306	Library Services	929-6333
Associate Dean of Health Professionals	929-6437	LSCC Police	925-3587
Bookstore	929-6310	Manufacturing and Engineering	929-3451
Business Affairs	929-6334	Mathematics and Science	929-6348
Associate Dean of Business		Social Sciences	929-6382
and Information Technologies	929-6306	Student Financial Services	929-6380
Campus Tours	929-3412	Student Life	929-3423
Career Technical Programs	929-3433	Student Recruitment	929-6352
College Transfer Programs	929-6348		929-6392
Counseling Services	929-6383		929-6421
		Student Support Services	929-3421
			929-3413
			929-3518
			929-6397

Bessemer Campus
(Exit 108 off Interstate 20/59)
1100 - 9th Avenue SW
Bessemer, Alabama 35022

Birmingham Campus
3060 Wilson Road, SW
Birmingham, Alabama 35221

Visit our web site at www.lawsonstate.edu