

**Alabama State Board of Education**  
**Alabama Community College System**

Bradley Byrne, Chancellor

**Lawson State Community College**

Dr. Perry W. Ward, President

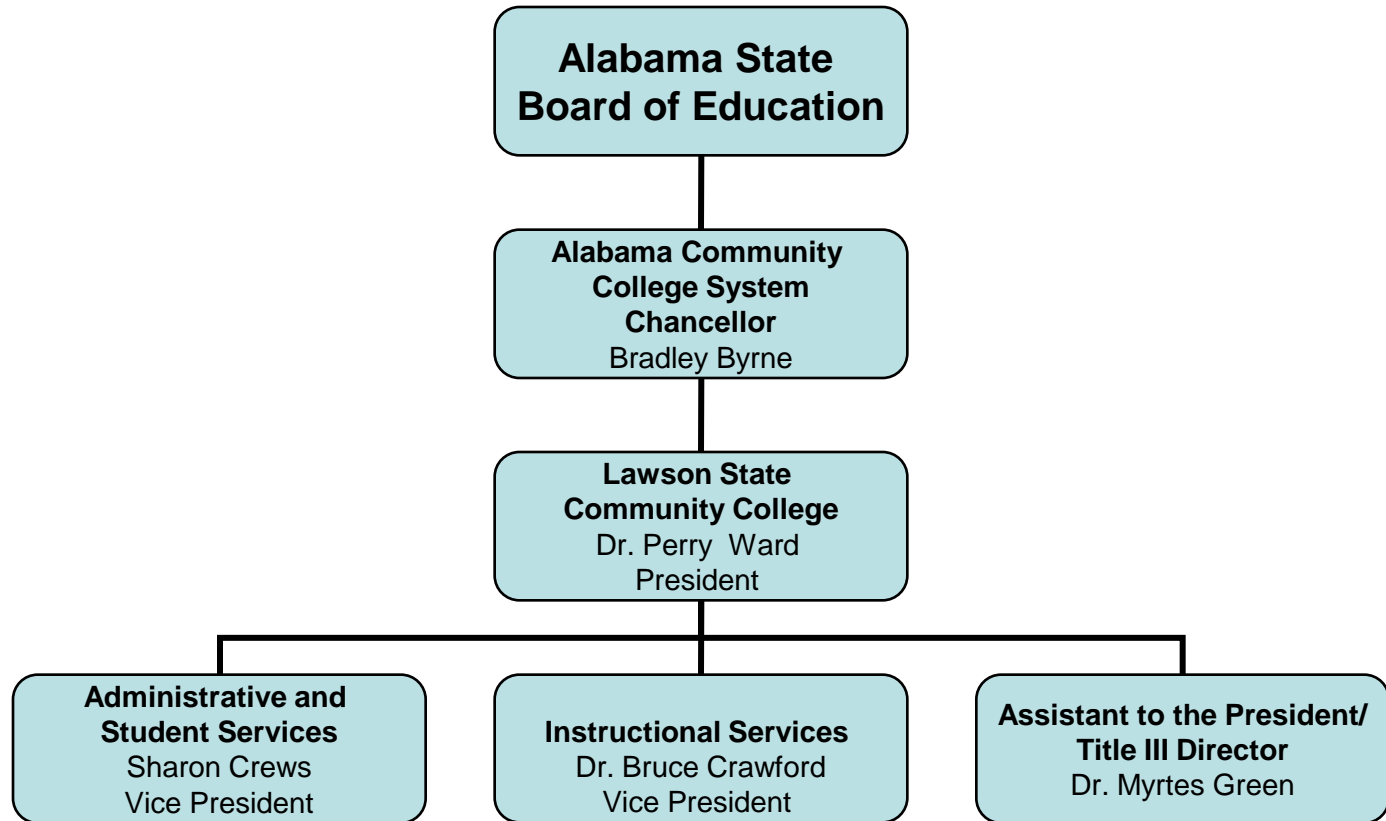
---

**Organizational Charts**

2008-2009

---

# Lawson State Community College Executive Administrative Cabinet



2008-2009

# **Alabama Community College System**

Bradley Byrne, Chancellor

## **Lawson State Community College**

Dr. Perry W. Ward, President

---

### **Division of Administrative & Student Services**

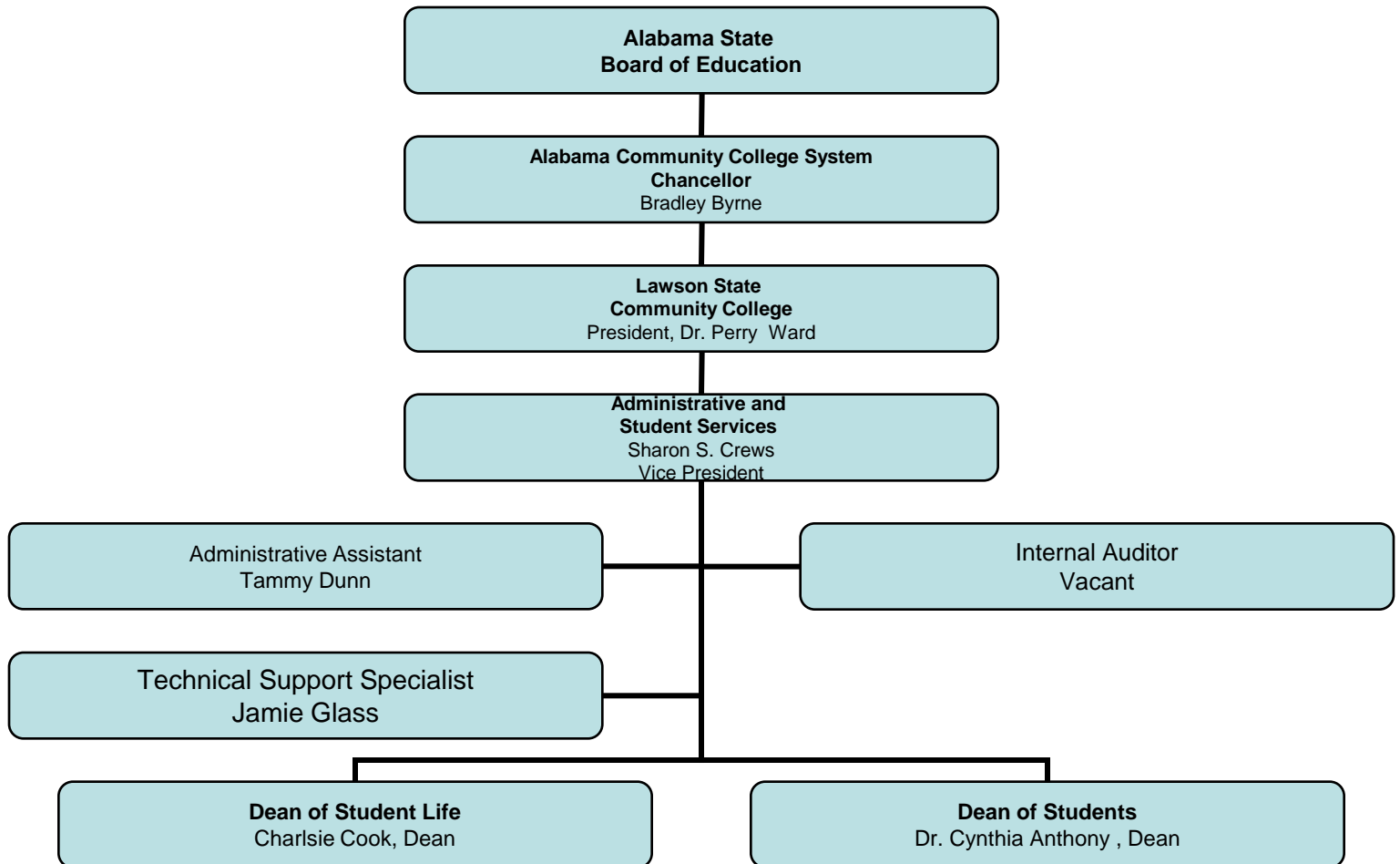
Sharon S. Crews, CPA

Vice President for Administrative & Student Services

---

# Lawson State Community College

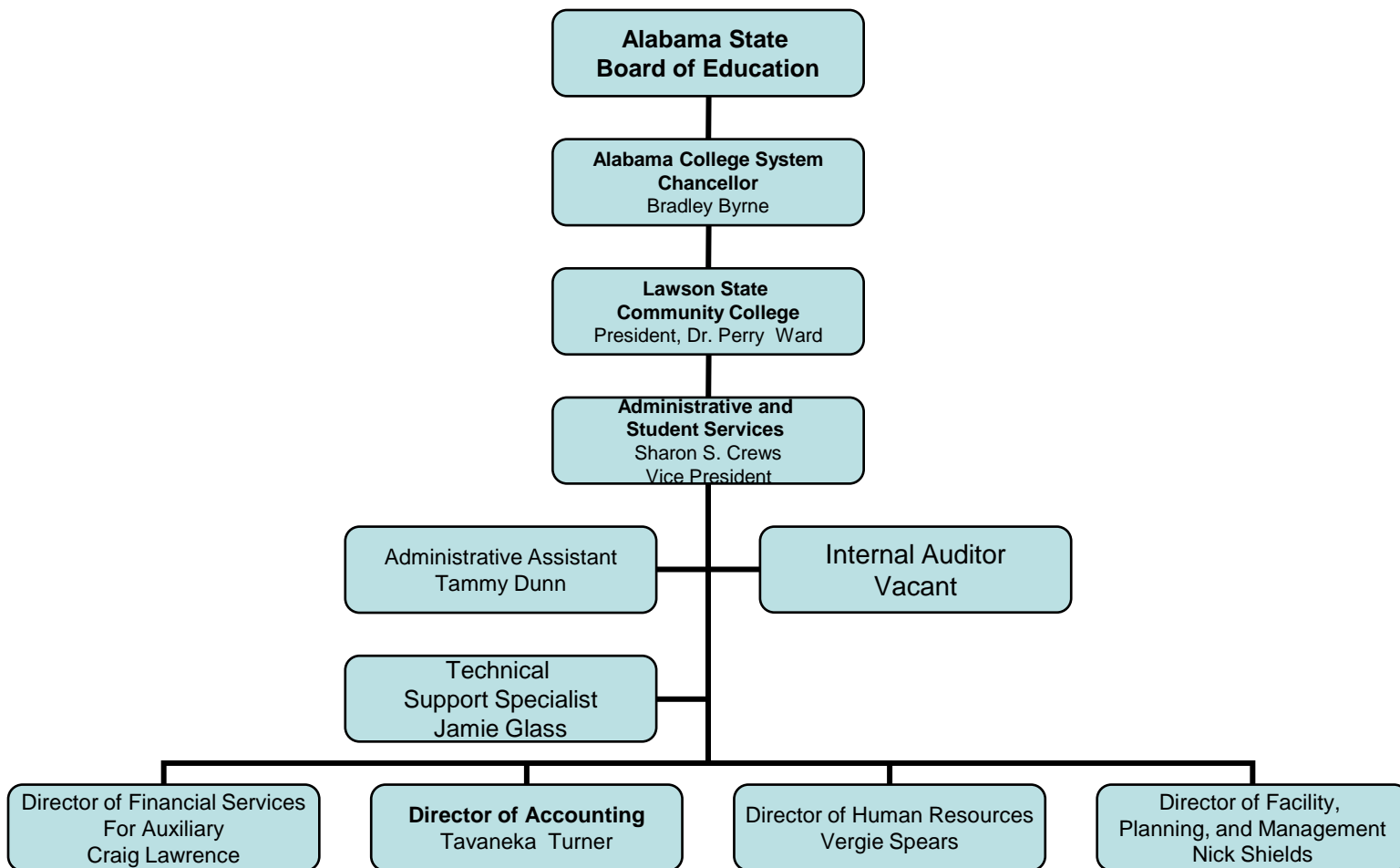
## Administrative and Student Services Organizational Chart



2008-2009

# Lawson State Community College

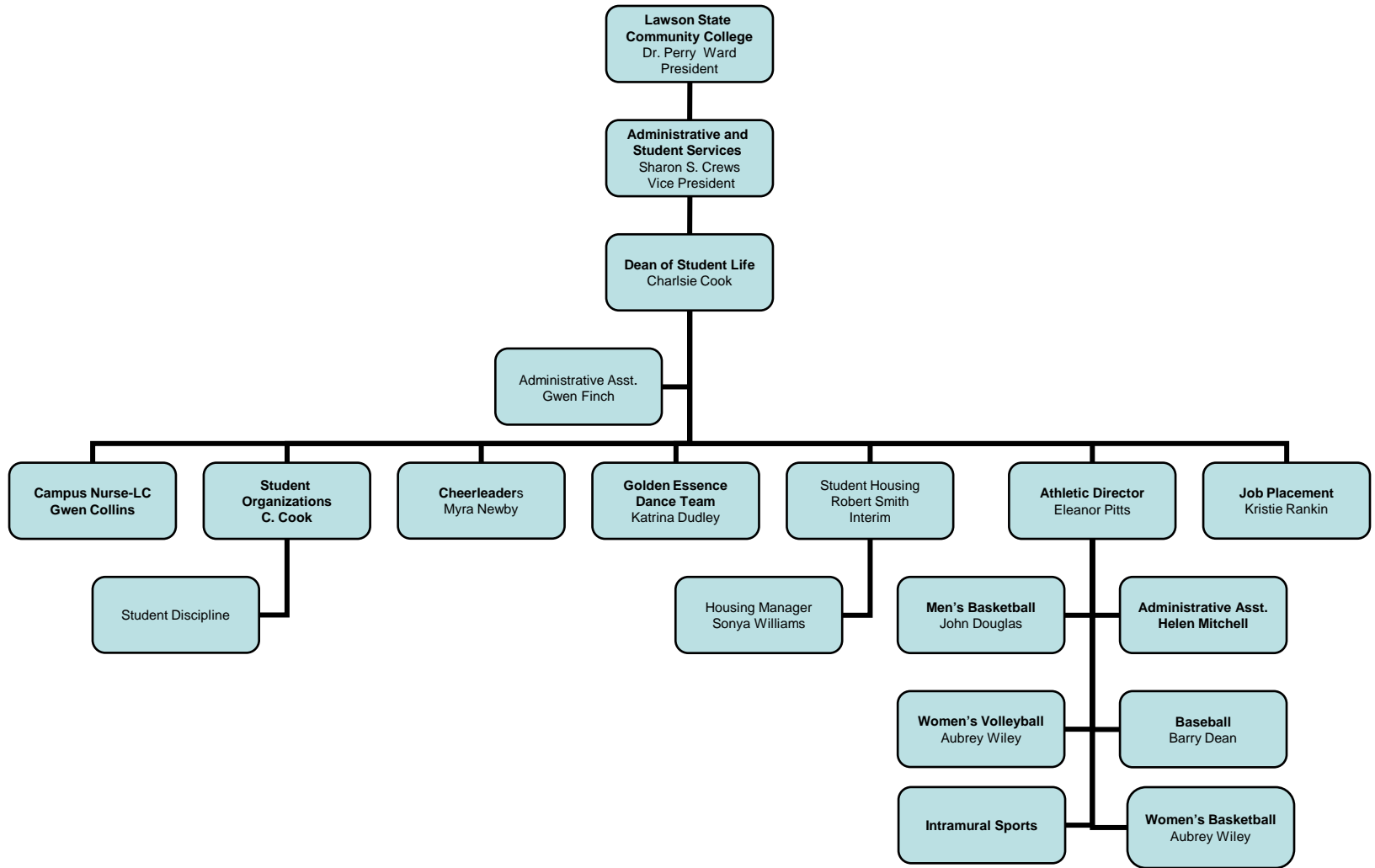
## Administrative and Student Services Organizational Chart



2008-2009

# Lawson State Community College

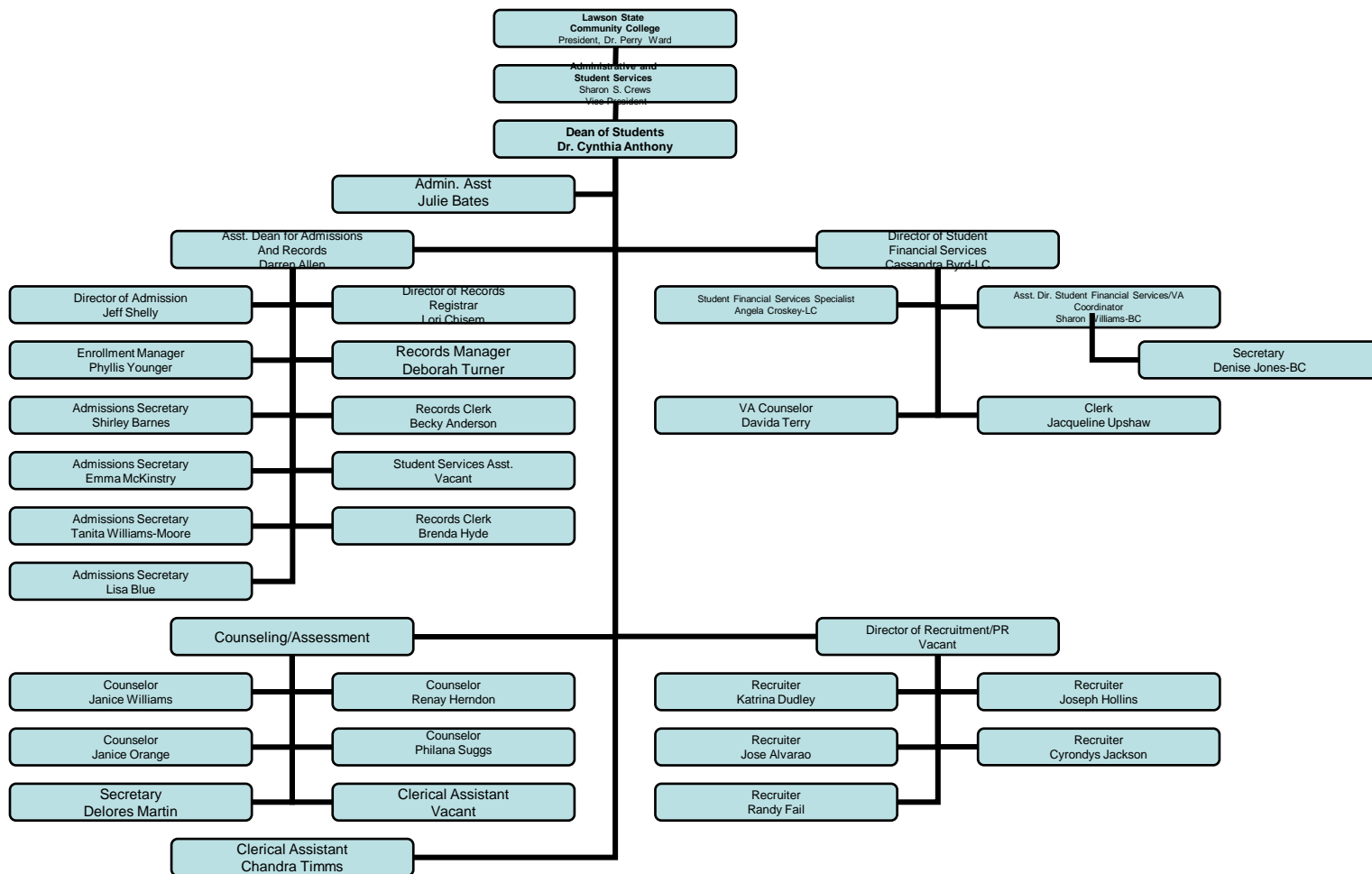
## Administrative and Student Services Organizational Chart



2008-2009

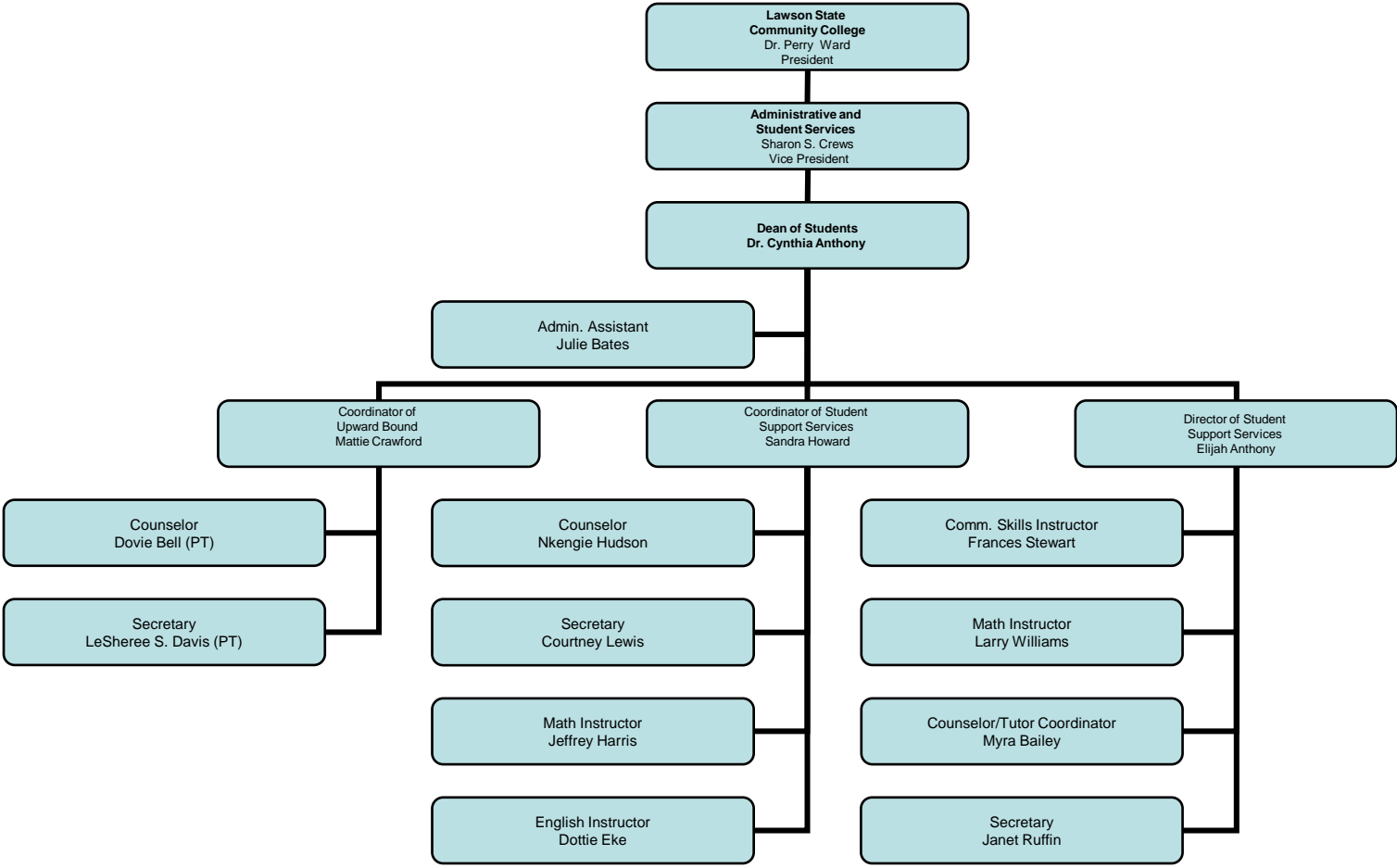
# Lawson State Community College

## Administrative and Student Services Organizational Chart

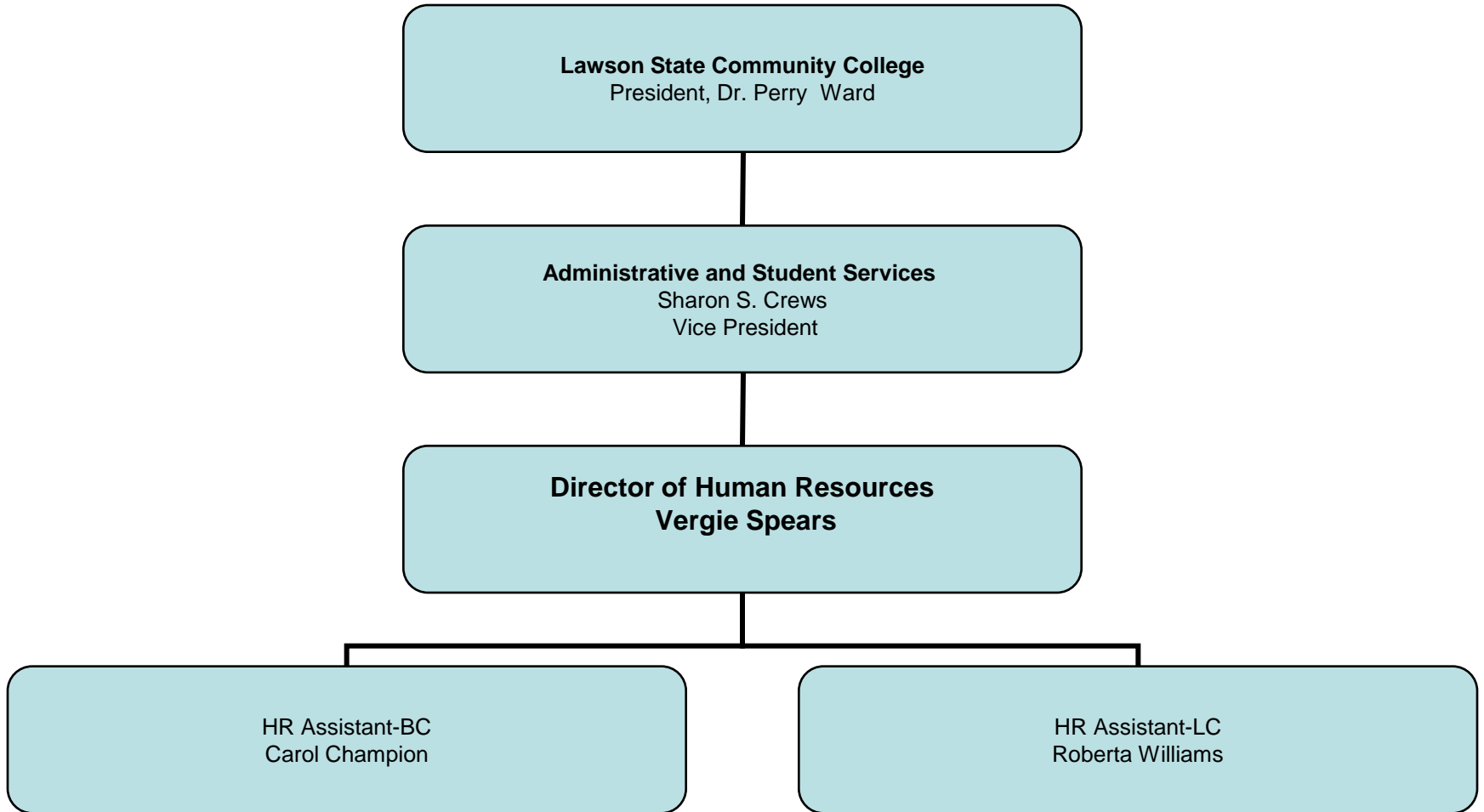


# Lawson State Community College

## Administrative and Student Services Organizational Chart



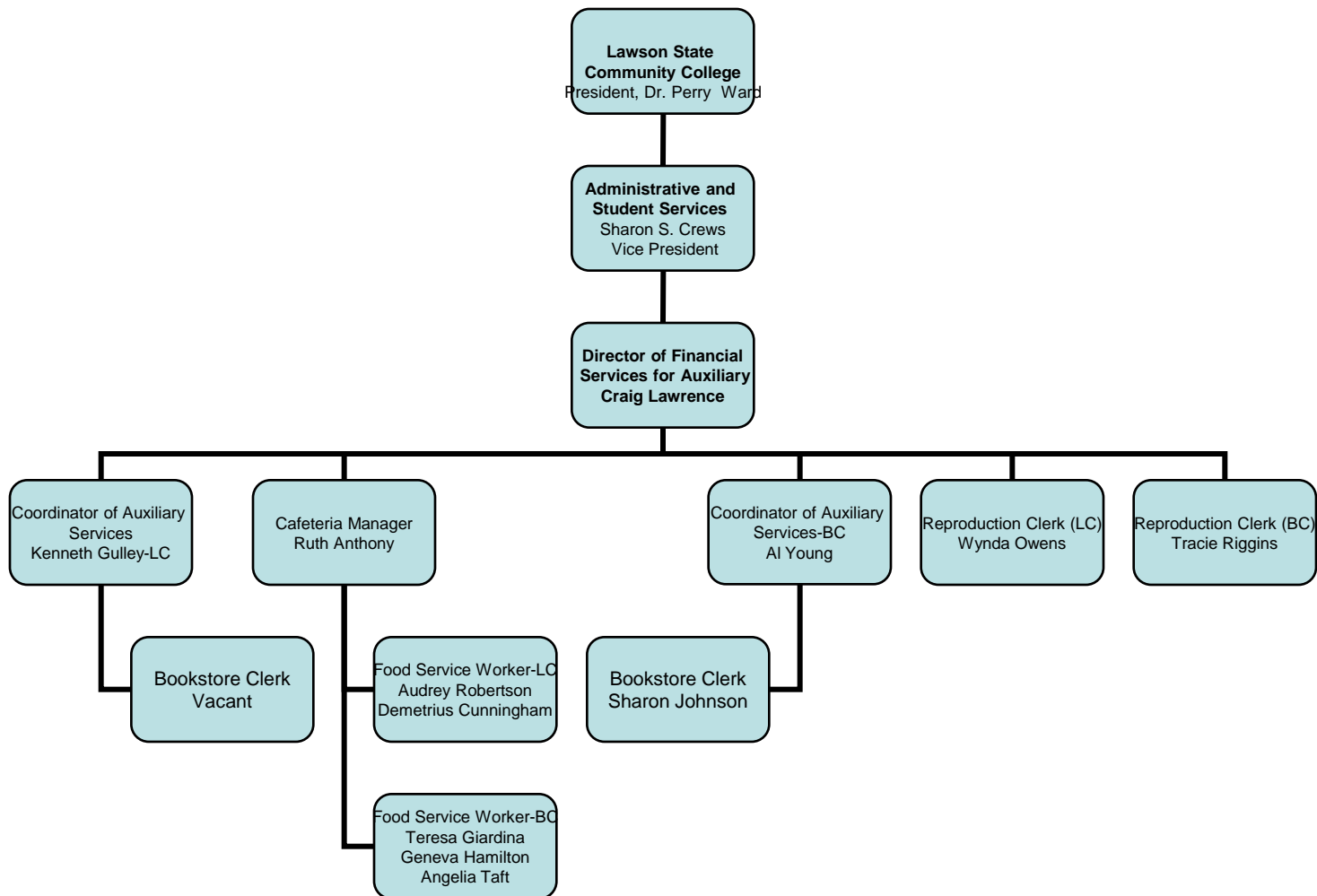
# Lawson State Community College Administrative and Student Services Organizational Chart



2008-2009

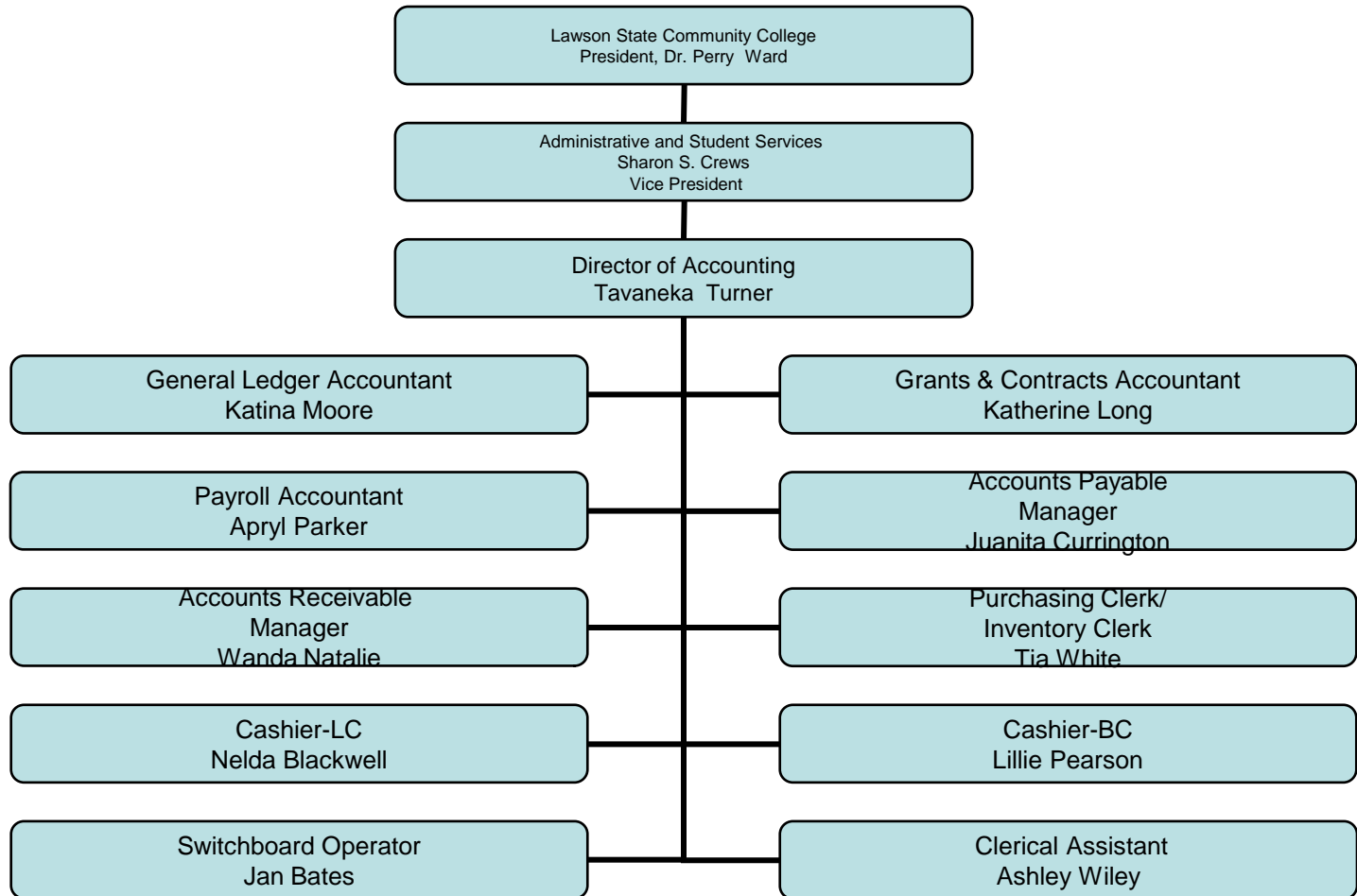
# Lawson State Community College

## Administrative and Student Services Organizational Chart



# Lawson State Community College

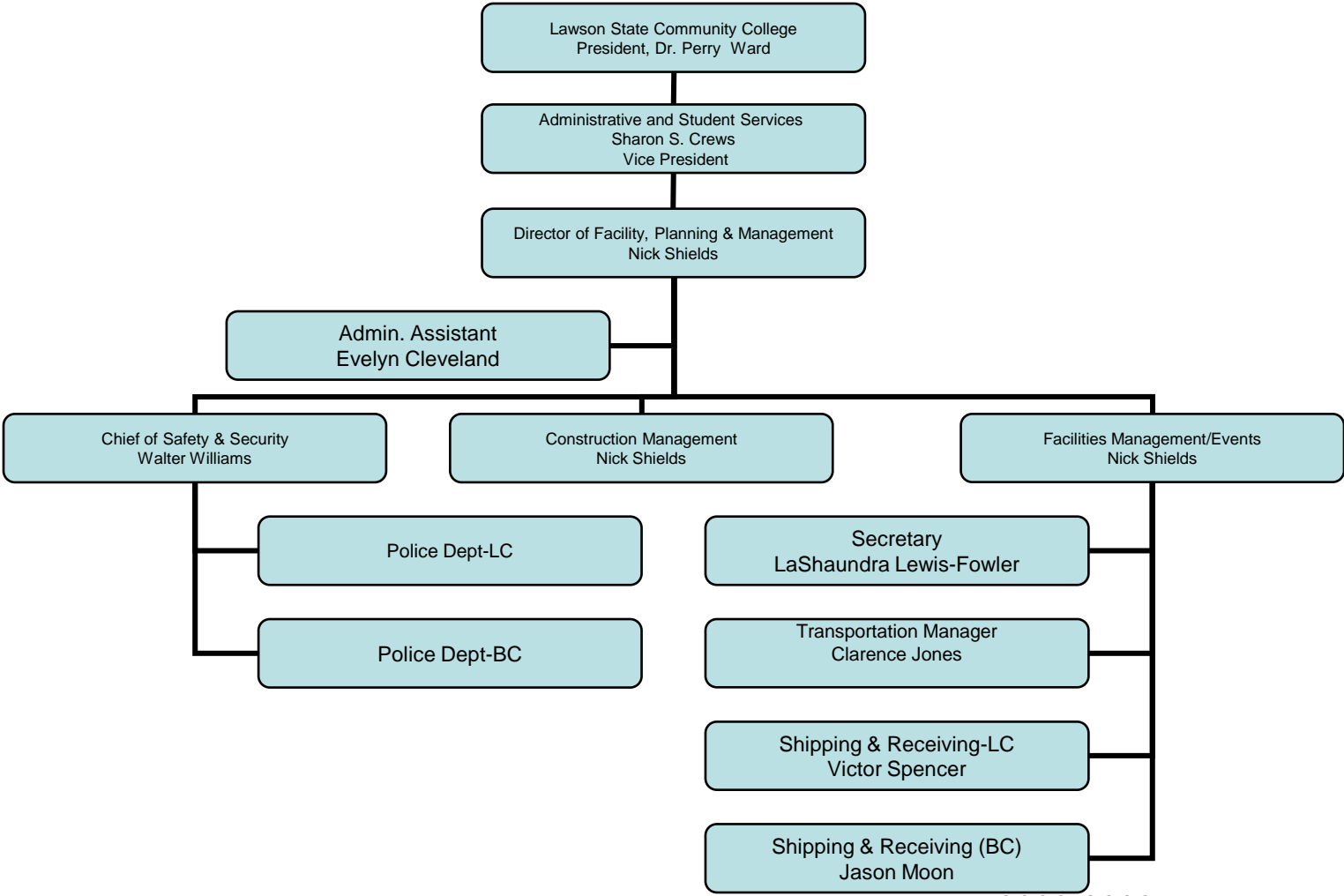
## Administrative and Student Services Organizational Chart



2008-2009

# Lawson State Community College

## Administrative and Student Services Organizational Chart



2008-2009

# Lawson State Community College

## Administrative and Student Services Organizational Chart

